

LIVE LIKE
A LOCAL



village

RESIDENCE
WEST COAST

Make the most out of your stay and discover the hidden charm of serene west coast. Whether you wish to unwind at an idyllic park, or head out for a fun evening, this handy guide will help you truly live like a local during your stay with Village Residence West Coast.

EXPLORE

West Coast

Contents

- | | |
|-----------|-----------------------------|
| 04 | <i>Eat like a Local</i> |
| 10 | <i>Play like a Local</i> |
| 14 | <i>Explore like a Local</i> |
| 18 | <i>Live like a Local</i> |

Information is accurate as at time of compilation.

EAT

Embark on your exploration of Singapore like a local, by partaking in a favourite pastime of many Singaporeans - eating! Indulge in the myriad of local delicacies available in this culinary-rich district, and enjoy your discoveries!



Photo credit: westcozcafe.com

West Co'z Café 🚶 2-min walk
154 West Coast Rd #02-23 West Coast Plaza, Singapore 127371

Renowned for its authentic local *zi char* dishes with a halal twist, dive into the heart of Singaporean flavours. Whether you're in the mood for a hearty meal with family or a quick bite with friends, this is the perfect spot to satisfy your cravings!

MUST TRY

Curry Fish Head

LOCAL SLANG

zi char (a casual food stall in Singapore that serves affordable, home-style Chinese dishes)

From quaint bistros to lively food eateries, the west coast offers a number of chic places to relax and unwind while enjoying a drink.

West Coast Market Square 🚶 3-min walk
726 Clementi West Street 2, Singapore 120726

Tucked away in the heart of West Coast is this vibrant food centre that offers an array of mouthwatering dishes that celebrate Singapore's diverse food heritage. Give Ji Xing Hainanese Curry Rice, Soon Lee Fishball Noodles and Ming Kee Porridge a try, *don't say bojio!*

MUST TRY

Hainanese curry rice, fishball noodles

LOCAL SLANG

Don't say bojio (Used when inviting someone, as a disclaimer that they are being included)



Photo credit: www.singaporeatrium.sale.com.sg

🚗 4-min drive 🚶 11-min walk

Fu Yuan Handmade Dim Sum

710 Clementi West Street 2,
Singapore 120710

Enjoy a *bao* – or two – in this *kopitiam* that serves delicious hot steamed buns. Go with the basics or be spoiled by the vast range of shapes and fillings offered. Either way, you are in for a treat.

MUST TRY

Ji Wo Bao & Liu Sha Bao

LOCAL SLANG

1. *Bao* (steamed buns with various filling)
2. *Kopitiam* (a traditional breakfast and coffeshop found in Southeast Asia)



Photo credit: www.canva.com

EAT
LIKE
A LOCAL

W39 Bistro & Bakery 🚗 6-min drive 🚶 12-min walk
39 Jln Mas Puteh, Singapore 128637

Kickback, *relak* and enjoy a tall latte or lager at this pet-friendly rustic café, which also serves European dishes as well as locally influenced cuisines.

MUST TRY

Hazelnut Crunch Bar Cake

LOCAL SLANG

Relak (*Relax in Malay language*)

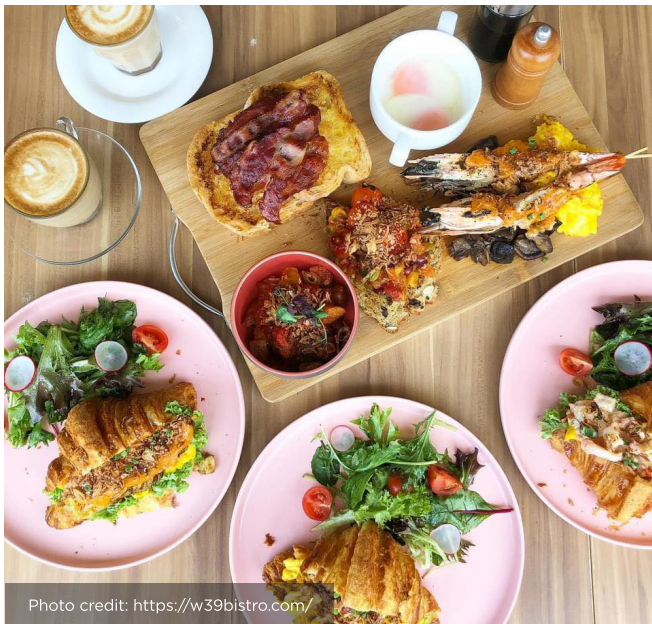


Photo credit: <https://w39bistro.com/>



Photo credit: <https://www.dariopizzaandmore.com/>

Dario Pizza & More 🚗 8-min drive
6 Clementi Rd, Singapore 129741

Whether you're craving handcrafted pizzas or delicious pastas, Dario offers a satisfying dining experience with a touch of Italian charm — perfect for casual meals with family and friends! *Chop chop* let's go!

MUST TRY

Estate pizza

LOCAL SLANG

Chop chop (*quickly*)

PLAY

Fun times are ahead as you explore the precinct from family-friendly playgrounds to recreational parks, pick the activity that suits you best and go all out!



Photo credit: wherewcrowded.sg

Wan To Play Candyland 1-min walk

154 West Coast Rd, #02-44/45 West Coast Plaza, Singapore 127371

Enjoy a fun-filled family adventure at Wan To Play! This candyland-themed indoor playground offers a giant ball pit, 11 play zones, obstacle courses, a sensory sandbox, and a whimsical pretend play area—endless fun for every child *lah!*

MUST TRY

Giant ball pit

LOCAL SLANG

Lah (used to add emphasis or indicate a casual tone)

West Coast Park  4-min drive  14-min walk
West Coast Ferry Rd, Singapore 126978

West Coast Park is a family favourite ideal for picnics, kite flying, and scenic strolls that help you soul-search and find your inner *qi*. The park also features cycling paths, barbecue pits and a dog run with an obstacle course offering plenty of tail-wagging fun for your fur kids.

MUST TRY

Dog run area

LOCAL SLANG

Qi (circulating life force based on Chinese philosophy)



Photo credit: www.nparks.gov.sg



Photo credit: www.snowcitysingapore.com

Snow City 🚗 14-min drive
21 Jurong Town Hall Rd, Singapore 609433

Cannot *tahan* the heat? Head to Singapore's Snow City, an indoor winter wonderland with snow-filled landscapes, ice sculptures, and thrilling activities like snow tubing and snow play zones!

MUST TRY
Snow tube

LOCAL SLANG
Tahan (to endure or bear with)

Science Centre Singapore 🚗 15-min drive
15 Science Centre Rd, Singapore 609081

Jio your *kakis* and head to Science Centre Singapore for a fun, mind-blowing adventure! With interactive exhibits, hands-on experiments, and exciting shows, it's the best place to explore science in a super fun and engaging way.

MUST DO

Explore different exhibitions

LOCAL SLANG

Jio (Invite)
Kakis (friends)

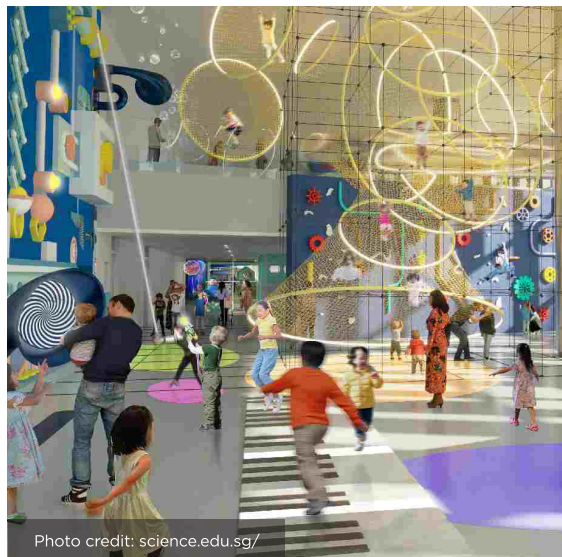


Photo credit: science.edu.sg/

PLAY
LIKE
A LOCAL

EXPLORE

Feed your hunger for knowledge by visiting the numerous cultural sites spread across the west coast. Learn about Singapore's tumultuous war years, local myths and legends, or simply appreciate the architecture of years gone by.



Photo credit: lkchm.nus.edu.sg

NUS Museum 🚗 6-min drive
50 Kent Ridge Cres, Singapore 119279

Wah seh, NUS Museum boasts a rich tapestry of art and culture, with diverse collections of contemporary and Southeast Asian art, offering a fascinating journey through history and creativity. A must-visit for art enthusiasts!

MUST SEE

Diplodocid sauropod fossil exhibit

LOCAL SLANG

Wah seh (A Hokkien term used to express surprise, admiration, or liking)

Haw Par Villa 🚗 8-min drive
262 Pasir Panjang Rd, Singapore 118628

Haw Par Villa was built in the 1930s and features a thousand statues depicting Chinese mythology, folklore, legends and history. Do not miss the most famous attraction, the Ten Courts of Hell showing gruesome scenes that will make you exclaim "*wah piang!*"

MUST SEE

Ten Courts of Hell

LOCAL SLANG

Wah piang (a Hokkien term used in much the same way as "*oh my goodness!*")



Photo credit: hawparvilla.sg

EXPLORE
LIKE
A LOCAL

Reflections at Bukit Chandu

🚗 10-min drive

Pepys Rd, #31 - K, Singapore 118458

A hidden gem showcasing Singapore's wartime history, this museum at the site of the 1942 Battle of Pasir Panjang features captivating exhibits and stories of bravery from the Malay Regiment. The serenity of the place makes it unbelievable that one of the most *garang* battles in Singapore's history took place here. Visit and uncover the stories that shaped the nation!

MUST SEE

The Malay Regiments, Into Battle and Aftermath exhibitions

LOCAL SLANG

Garang (fierce)



Photo credit: gsmproject.com



Photo credit: thehoneycombers.com/

Gillman Barracks

🚗 16-min drive

9 Lock Rd, Singapore 108937

Gillman Barracks is a vibrant arts hub where contemporary art meets history. Housed in a former military barracks, it's now home to galleries, exhibitions, and creative spaces. Whether you're an art enthusiast or simply seeking something unique, *jalan jalan* for a cultural experience!

MUST SEE

Local art galleries and hosted 'Art and History' tours.

LOCAL SLANG

Jalan (to stroll or to go for a walk)

EXPLORE
LIKE
A LOCAL

The Village Guide to SINGLISH

Singlish is a language unique to Singapore, which blends elements of English, Chinese, Malay and Tamil. It is a central expression of the cultural and historical background of Singapore.

Try incorporating some of these Singlish words into your conversations to speak like a local!

Alamak

Exclamation to express when one makes a mistake
Eg. *Alamak, I forgot my passport!*

Shiok

Tastes or feels good
Eg. *This burger / massage is so shiok!*

Lah

Used at the end of sentences to indicate tone of anger or agreement
Eg. *Yes lah... / Yes lah!*

Leh

Used at the end of sentences to sound more placating in a disagreement or to persuade
Eg. *No leh... / Yes leh, he did leh. / Go leh.*

Wah

Exclamation to express shock or disappointment
Eg. *Wah lao! / Wah lao... How could he do that?*

Order drinks like a Local

Singapore has a well-established *kopitiam* (coffee shop) culture that many locals hold close to their hearts.

Kopi in Singapore is made from Robusta beans, which have on average 83% more caffeine than standard arabica coffee! The beans are roasted in a wok with butter or margarine with sugar, enhancing the coffee's flavour.

You may notice quirky practices, particularly during order takings for beverages. Here is a guide to acquaint you with some of the unique terms Singaporeans use when ordering their preferred drink!



Directions to Village Residence West Coast

Train

EW23 Clementi
(2 min drive or 4 min bus ride via 282)

Bus

West Coast Road Block 601:
30, 51, 143, 175, 201, 533, 589

West Coast Road Block 726:
30, 51, 143, 201, 282

Car/Taxi

25 mins from the city centre
26 mins from the airport

Taxi hotline

Comfort Taxi +65 655 2111
SMRT Taxis +65 6555 8888
Limousine Cab +65 6535 3534

Ride-Hailing Applications

 CDG Zig

 Gojek

 Grab

EMERGENCY NUMBERS

Police	999
Fire & Ambulance	995
Non-Emergency Ambulance	1777
Village Residence West Coast	+65 6019 0371



